



# ALWAYS PITCH PERFECT

## EZ Pitched Roof System



Employ the industry's most versatile, installer-friendly pitched roof mounting system.

Our patented easy-to-use flagship EZ Roof Mount anchor hundreds of MW in installed capacity. With a full range of roof mounts and components, our pitched roof system can be configured in an endless variety of designs.

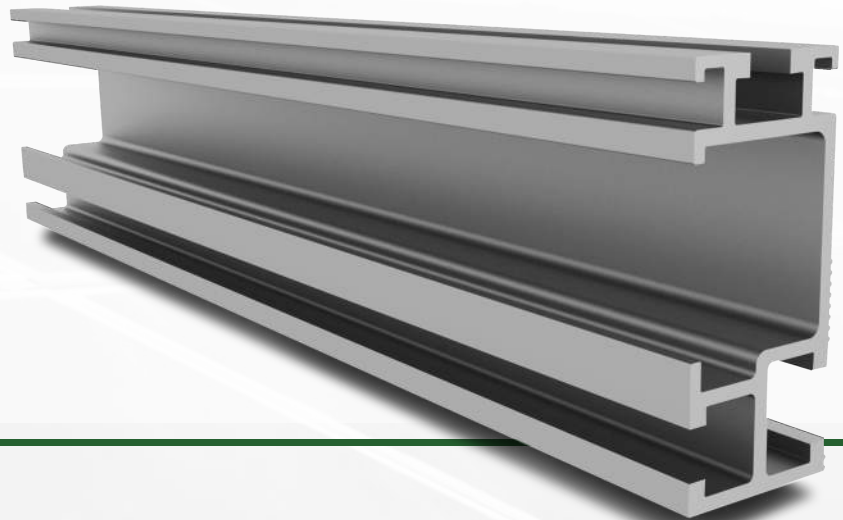
### The EZ Pitched Roof System Advantage

- ✓ Strong, light-weight, corrosion-resistant aluminum.
- ✓ A full range of roof attachments to meet every need.
- ✓ Integrated grounding tested and certified to UL 2703 by Intertek.
- ✓ Online configuration tool to streamline design process
- ✓ Easy to install with minimal components.

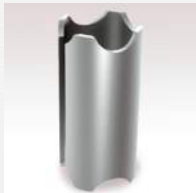
The durable aluminum HR150 rail supports a range of wind and snow conditions with span up to 8'. The system makes it easy to route PV wires inside rail channels with our channel clip. Pair it with one of our industry leading mounting options and you'll be on and off the roof in record time!

## HR150 Open Rail

- 8' Span
- Wire Management Feature

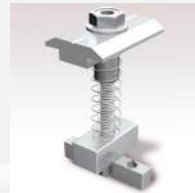


## Clamps & Grounding



### Bonding Pins

Each product in our new system features self-grounding pins that pierce rail coatings to form a reliable, durable grounding connection as part of the natural installation process



### Bonding Mid Clamp

Our self-grounding universal mid clamps have our own innovative "T" bolt locking assembly that makes positioning and torquing a breeze.



### Bonding Rail Splices

Our splices with built-in grounding pins deliver a stronger rack and a solid bond between rails.



### End Clamp

Our adjustable end clamps accommodate different PV module frame heights ranging from 30mm to 55mm.



### Grounding Lug

Our lug features self-grounding to the rail, ensuring proper grounding of the PV system.



### Shared Rail Adaptor

Our system easily converts standard rails to shared rails to allow landscape mounting of PV panels on E-W rails.

## Technical Data

Application	Pitched Roof
Roof Type	Composition shingle, metal and tile
Material	High grade aluminum, 304 stainless steel hardware
PV Modules	Compatible with all common module types
Module Orientation	Portrait and landscape
Structural Integrity	IBC compliant, stamped engineering letters available
Certificate	Certified to latest UL2703
Warranty	20 years