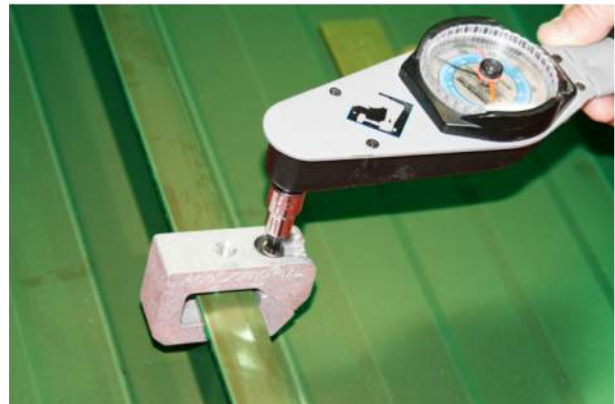


AceClamp® Installation Instructions



1. Pick Pre-Assembled AceClamp®
20/box 4 boxes/case

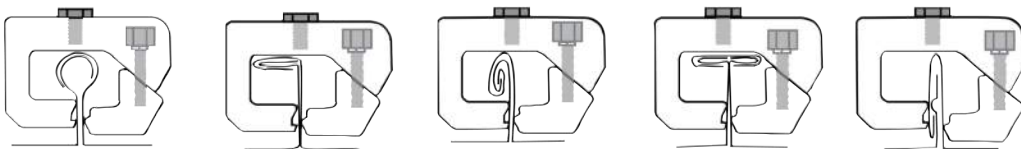
2. Position AceClamp® on your roof panel. See line drawing below for panel orientation.



3. Tighten top loaded AceClamp® on your roof panel with ¼" hex driver

4. Torque A2™ AceClamp® with a calibrated torque wrench to specs.

175 in/lbs – Steel Roof
135 in /lbs – Aluminum Roof



ML Roof Profile Orientation

At no time should you use the AceClamp® as part of your fall-protection system!

Proof is on the Roof™ Made in the U.S.A.

