



EZR Roof Mount Kit

Installation Instructions for attaching the EZR Roof Mount Kit to composite shingle roofs.

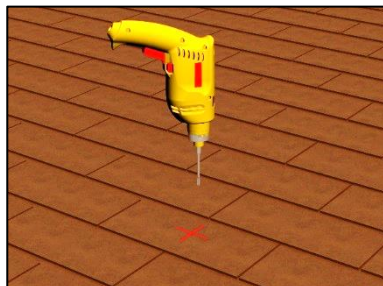
Please read carefully before installing.

The SunModo EZR Roof Mount Kit comes complete with all the hardware needed to attach the L-Foot to the composite shingle roof and provide a water tight seal.

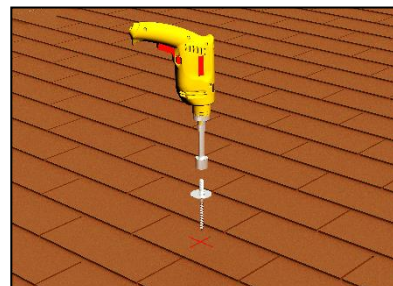
Installation Procedure:



Locate rafter and mark 2-1/4 inches below shingle edge.



Drill pilot hole for Hanger Bolt with a 7/32" drill bit.



Fill hole with sealant before installing Hanger Bolt.



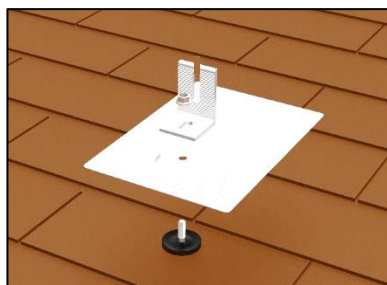
Do not overdrive Hanger Bolt into composite shingles.



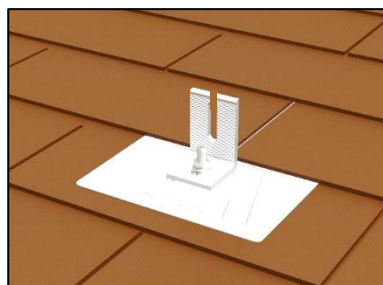
Install EPDM Gasket with recess facing downward.



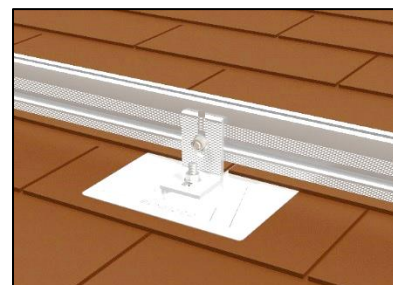
Gasket should sit flat on the Fender Washer.



Use roofer bar to lift roof shingle, slide the flashing under shingle, and insert the Flashing on threaded shank.



Secure the L-foot onto the Hanger Bolt using the 3/8 Flange Nut. Torque to 15 ft-lbs. For best long term water protection add sealant into L-Foot slot.



Secure the Rail to L-Foot using 3/8 T-Bolt and 3/8 Flange Nut. Torque to 15 ft-lbs.

Tools Required:

7/32" long-style bit, torque wrench, 1/2" and 9/16" wrench sockets, structural sealant such as Chem-link M1, or Uniflex KST058XXX for wood and composite roofs, caulking gun, tape measure, string line and drill.